

Art work locations correspond to numbers on this map. See other side to identify individual art work by number.

1. *Watson and the Shark* by John Singleton Copley.  
Location: Gaylord City Hall (305 E. Main St)



2. *Konigsee* by Willibald Wex. Location: Gaylord Area Council for the Arts (125 E. Main St)

3. *Portrait of a Mughal Prince* by Unknown Artist.  
Location: Claude Shannon Park (126 W. Main St.)



4. *Chief Shoppenegons* by Eanger Irving Couse. Location: Crave Restaurant (corner of N. Court and W. Main St., on the west wall)

5. *Study for "Birds"* by Albert Moore. Location: Ah Loy Bamboo Restaurant (corner of N. Court and W. Main St., on the east wall )



6. *Cotopaxi* by Frederic Edwin Church. Location: Gaylord Area Chamber of Commerce (319 W. Main St., on the west wall)

7. *Postman Roulin* by Vincent van Gogh. Location: Otsego County Courthouse (225 W. Main St., near the fountain)



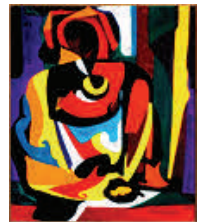
8. *Fourteenth St. at Sixth Ave.* by John Sloan. Location: Gaylord Public Restroom (corner of S. Court & First St.)

9. *Violinist and Young Woman* by Edgar Degas.  
Location: Huntington Bank (100 E. Main St.)



10. *Irises and Calla Lilies* by Maria Oakley Dewing.  
Location: Otsego County Demonstration Gardens (corner of Livingston & Cross St., in the gardens)

11. *Mother and Child* by Solomon Irein Wangboje. Location: Otsego County Demonstration Gardens (corner of Livingston & Cross St., near the pavilion)



12. *A Day in June* by George Wesley Bellows. Location: Otsego County Sportsplex (1250 Gornick Ave., near tennis courts)

13. *The Wedding Dance* by Pieter Bruegel the Elder.  
Location: Otsego County Sportsplex (1250 Gornick Ave., on the building)



14. *The Lily Pond* by Charles Harry Eaton. Location: Aspen Trail (239 W. Commerce Blvd—corner of Commerce & Village St. On the main trail, near the first bench.)

15. *Nocturne in Black and Gold: The Falling Rocket* by James McNeill Whistler.  
Location: Aspen Trail (239 W. Commerce Blvd—corner of Commerce & Village St. On the main trail, near the pavilion.)

